

COLORIT Enameling System



COLORIT



The modern ColorIt gives the designers countless opportunities to produce distinctive and colorful creations.

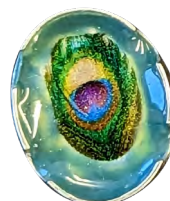
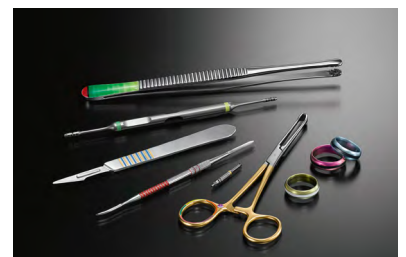
The color-fast tones are available in a number of nuances and can also be freely mixed, giving you virtually limitless design possibilities.

ColorIt composite material with ceramic reinforcement can be applied quickly and easily, hardened permanently under blue light and ground and polished mechanically.

The material is adhesion, shock and wear resistant, making it ideal for high-quality and individual designs.

Features

- * Composite material with ceramic reinforcement
- * Biocompatible and patented
- * Quick and easy to process, grind and polish
- * Adhesion-, scratch-, shock- and wear-resistant
- * Can be sterilised. Meets medico-technical requirements
- * Color-fast and UV-stable
- * Finished workpieces can be galvanised
- * High-quality and individual color design
- * Resistant to acids, alkalis and many solvents



Explore more
<https://www.harshad.com/colorIT>



COLORIT Colour Kit



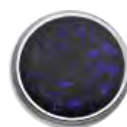
Basic White
(PAN White C)



Deep Yellow
(PAN 108 C)



Trend Blueberry
(PAN 19-2820 TPX)



Eyefect Saphyre XL
on Deep Black



Deep Black
(PAN Black 6 C)



Basic Yellow
(PAN 116 C)



Trend Orange
(PAN 1655 C)



Trend Raspberry
(PAN 19-1860 TPX)



Eyefect Amber XL
on Deep Black



Pearl Red
on Deep Black



Deep Red
(PAN 200 C)



Trend Pink
(PAN 205 C)



Trend Raspberry
Cream
(PAN 16-1715 TPX)



Eyefect Malachit
on Deep Black



Pearl Green
on Deep Black



Deep Blue
(PAN Reflex Blue C)



Trend Sky Blue
(PAN 301 C)



Trend Mocca
(PAN 19-1217 TP)



Eyefect Jade
on Deep Black



Pearl Blue
on Deep Black



Deep Green
(PAN 561 C)



Trend Kiwi
(PAN 360 C)



Trend Coffee Liqueur
(PAN 18-0930 TPX)



Crash Ice
on Deep Black



Pearl White
on Deep Black



Trend Lime Punch
(PAN 13-0550 TPX)



Trend Ice Blue
(PAN 315 C)



Trend Coffee Latte
(PAN 15-1116 TPX)



Gun Powder
on Deep Black



H + M