

MasterInject MJ 01

Single Workstation

MJ-01 SMART

Standard wax injector with single right station for single operator, equipped with aluminum tank (capacity of 4.5 kg), 25 cm³ piston injection system, external and removable 7" touch screen, RFID reader and writer (optional), self-centering clamp C13 (Dim. 130x120 x50 / 65 mm) and pump included VAP14.

MJ 01-C13

| | |
|------------------------|--|
| System Pressure | 6 Bar |
| Power | 240 V AC / 120 V AC(Optional) |
| Dimensions (W x D x H) | Machine : 580 x 340 x 480 mm Packing : 750 x 550 x 650 mm |
| Weight | Machine : 30 kg Packing : 54 kg |



MasterInject MJ 02

Double Workstation

MJ-02 SMART

Standard double-station wax injector for single or double operator, equipped with;

- * Aluminum tank (capacity of 4.5 kg)
- * 2 x 25 cm³ injection pistons
- * 2 x external and removable 7-inch touch screens
- * 2 x RFID readers and writers (optional)
- * 2 x C13 self-centering pliers (Size 130x120x50/65 mm)
- * Pump included VAP14

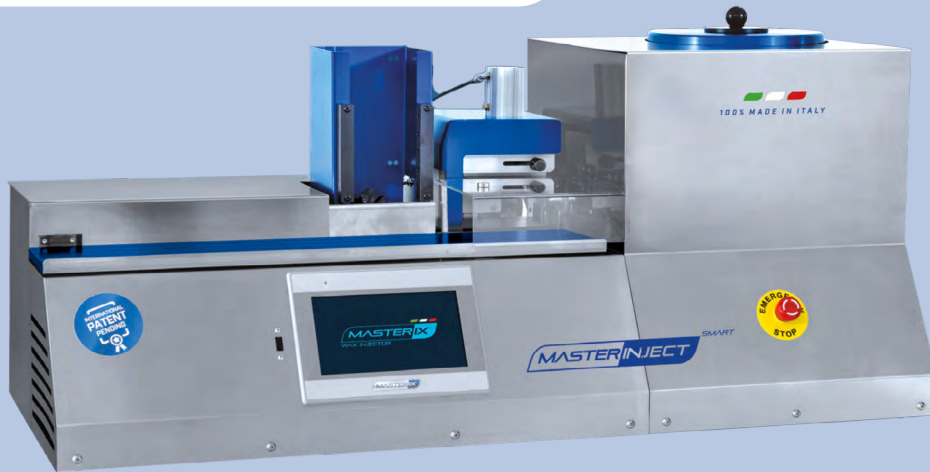
MJ 02-C13

| | |
|------------------------|---|
| System Pressure | 6 Bar |
| Power | 240 V AC / 120 V AC(Optional) |
| Dimensions (W x D x H) | Machine : 920 x 340 x 480 mm Packing : 1150 x 550 x 650 mm |
| Weight | Machine : 46 kg Packing : 75 kg |



MasterInject MI 03

Automatic Wax Injector



Features MI-03 SMART

Fully automatic wax injector for single or double operator, equipped with aluminum tank (4.5 kg capacity), 10 cm³ piston injection system, 7" touch screen, RFID reader and writer, self-centering pliers (Dim. 100x100x50 mm) automatic tire loader and unloader (Dim. 100x100 mm), cooling system for molds and pump included VAP14.

Technical Advantages

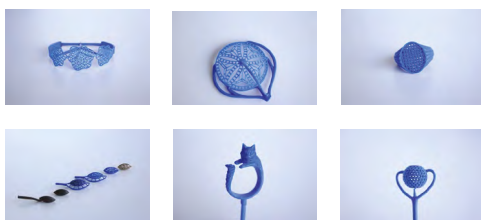
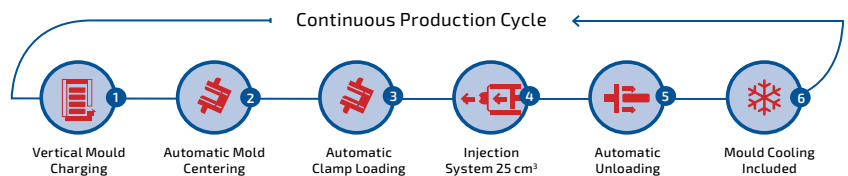
- * The molds, even of different sizes, are automatically loaded into the gripper, the processing cycle starts automatically. The operator does not have to press any keys. Quick and simple
- * The gripper centers the mold preparing it for injection. The mold parameters are set or automatically read on the RFID Tag, if present in the mold. Significant time savings.
- * The mold is automatically injected according to the set parameters. Easy for the operator
- * The mold is rotated and automatically discharged onto the cooler in front of the operator. Immediate and compact
- * The cooler keeps the temperature of the molds constant, speeding up the cooling of the waxes. The cooler temperature can be set and adjusted directly from the touch screen.

Economic Advantages

- * Elimination of waiting times and consequent reduction of operator downtime. Increase in production
- * Strong increase in production, quality of models produced, elimination of waste.
- * Recommended for inexperienced operators.

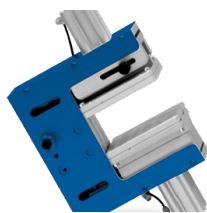
MI 03

| | |
|---------------------------|---|
| System Pressure | 6 Bar |
| Power | 240 V AC / 120 V AC(Optional) |
| Dimensions (W x D x H) | Machine : 920 x 340 x 480 mm Packing : 1150 x 550 x 650 mm |
| Weight | Machine : 46 kg Packing : 75 kg |



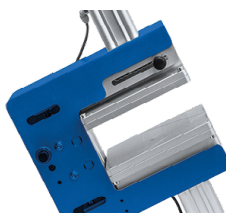
Explore more
<https://www.harshad.com/masterix>

Accessories for Injectors



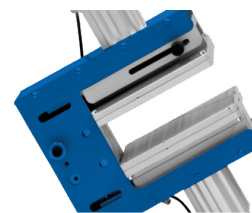
C 10 Clamp

Interchangeable standard clamp,
plate size 100x100x45/65 mm



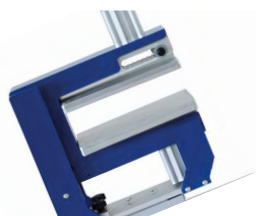
C 13 Clamp

Interchangeable medium clamp,
plate size 130x120x45/65 mm



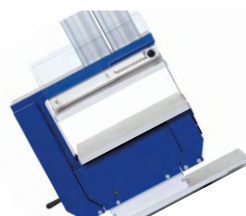
C 15 Clamp

Interchangeable big clamp,
plate size 150x130x55/70 mm



C 20 Clamp

Interchangeable clamp, plate
size 200x150x65/75 mm



C 25 Clamp

Interchangeable clamp, plate size
250x200x85 mm



Injection Piston S50



Injection Piston S100



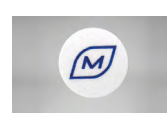
Custom Nozzle



Slide Mould SL-03



Slide Mould SL-03+



Round RFID Tag
15 mm



Rectangle RFID Tag
45 x 28 mm

Coolers for Moulds



Cooler CO-04D

Dimensions (L x W x H) 400 x 210 x 80 mm

Plate Dimensions 400 x 100 mm

Weight 4 kg



Cooler CO-06D

Dimensions (L x W x H) 600 x 210 x 80 mm

Plate Dimensions 600 x 120 mm

Weight 5 kg

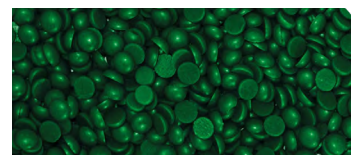
Wax of New Generation



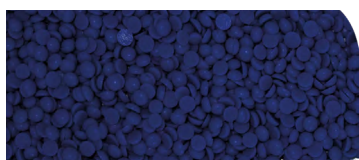
UNIVERSAL MASTERIX BLUE WAX
Wax suitable for all processes. Very flexible and elastic, it is particularly recommended for medium to high difficulty pieces. Shiny finish.



EXTRAFLUID RED
Extra Fluid red wax for filigree models.



SUPER MASSIVE GREEN
Green wax with very low shrinkage designed for massive models.



DARK DIAMOND
Flexible and break-resistant wax, dark in color for a perfect and easy setting.



SOLUBLE WAX
Wax totally soluble in water at room temperature, non-toxic, for the production of hollow pieces.



Explore more

<https://www.harshad.com/masterix>